



# THE GATEWAY

Chester Township

Fall/Winter 2025

## 2025 Senior and Community Clean Up Schedule

**\*Chester Township Senior Clean Up Days: September 8th-10th**

**\*\*Chester Township Community Clean Up Day: September 13th at Chester Recycle Park**

Attention Seniors! We are asking seniors who will be participating in the 2025 Trash Day Pick-up program to register NOW with the Department on Aging. Seniors who complete their yearly registration with Department on Aging prior to the clean-up dates, only need to make a phone call before the trash pick-up cutoff date to be placed on the community pick-up list.

**Registration Deadline Is August 29th**

**Please, no more than 10 items per household.**

Call (440) 279-2130 for Guidelines and Questions

## Kiwanis Club of West Geauga

### Leave & Take September 6th & 7th

**Leave:** Saturday Only/ **Take** on Both Saturday & Sunday

**Yes:** Clear out stuff you don't want anymore Take anything you like for FREE! Take Things you can use Both Sat & Sun Good, working, use able items. Housewares, tools, small appliances, sporting goods, toys, bicycles, chairs, tables, instruments, school supplies, books, shoes, lamps

**No:** Large appliances, upholstered furniture, mattresses, clothes, linens, TVs, desks or items weighing over 50 lbs, please.

\*Items left over after Sunday will be donated to Goodwill with any remainder going in the Chester Clean-up Day dumpsters

# A Message From Your Elected Officials

We may be in the midst of the dog days of summer, but the autumn season is fast approaching. There is no better place to experience this colorful and beautiful time of year than right here in Chesterland. As the air turns crisp and trees shift into their vibrant colors, the heart of Geauga County welcomes some great local fall fun. Friday night football games have already kicked off the fall sports season. Head out to the high school stadium to cheer on the Wolverines and enjoy our fabulous marching band!

With Patterson Fruit Farm, Eddy Fruit Farm and Mulberry Corners, we are truly lucky to have 3 different local family-owned establishments that provide family friendly fall destinations. Whether you're looking to pick apples or pumpkins, play in the hay, or grab some warm apple cider, these places each offer their own version on providing opportunities to make new memories with our families.

Fall then leads into Veteran's Day on November 11<sup>th</sup>. Please consider attending the Chesterland Veteran's Day ceremony to honor all of our veterans. The ceremony begins at 11 AM and is held at the Chester Township Park Gazebo. Then, before we know it, the Winter Fest & Tree Lighting event will be happening during the last weekend in November. This annual event has the tree lighting, holiday caroling, hot chocolate and smores. It's put on by the Rotary Club is always a fun event for all ages.

Joe Mazzurco-Trustee

## Meeting Schedules

| <b>Board of Trustees</b>           | <b>Zoning Commission</b>                           | <b>Board of Zoning Appeal</b>          | <b>Land Use Plan Committee</b>          |
|------------------------------------|--|--|---|
| Every other Thursday<br>at 6:30 PM | 1st and 3rd Wednesdays<br>Of Each Month<br>at 7 PM | 2nd Monday Of<br>Each Month<br>at 7 PM | 3rd Tuesday Of<br>Each Month<br>at 6 PM |

***\*All meetings are held at Town Hall unless otherwise noted. Meetings are subject to change.***

***Check [chestertwp.com](http://chestertwp.com) for current information.***

## Elected Officials and Administrative Office

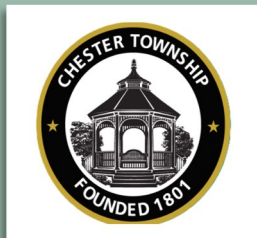
Ken Radtke-Trustee  
440-488-7471  
[kradtke@chestertwp.org](mailto:kradtke@chestertwp.org)

Joe Mazzurco- Trustee  
440-478-8293  
[jmazzurco@chestertwp.org](mailto:jmazzurco@chestertwp.org)

Craig S. Richter- Trustee  
440-477-3509  
[csrichter@chestertwp.org](mailto:csrichter@chestertwp.org)

Patricia Jarrett- Fiscal Officer  
440-477-5117 Ext.# 1003  
[pjarrett@chestertwp.org](mailto:pjarrett@chestertwp.org)

Chester Town Hall  
12701 Chillicothe Rd.  
Chesterland, OH 44026  
440-729-7058  
M-F 8 AM-4 PM



Mark Purchase- Township Administrator  
440-728-4880 Ext.# 1001  
[mpurchaseta@chestertwp.org](mailto:mpurchaseta@chestertwp.org)

Kimberly Bican- Administrative Assistant  
440-729-7058 Ext.# 1002  
[kbican@chestertwp.org](mailto:kbican@chestertwp.org)

Mary Lou Florentine-Fiscal Office Assistant  
440-729-7058 Ext.# 1004  
[mlflorentine@chestertwp.org](mailto:mlflorentine@chestertwp.org)

**\*Visit [www.chestertwp.com](http://www.chestertwp.com)  
For the Township calendar of events**

# Zoning Department

The Land Use Plan Update Committee is well under way. The group has met 4 times now as a whole and broken into sub-committees on the following topics: Housing, Zoning, Property Maintenance, and Commercial and Industrial Districts. Each subcommittee has met at least once and the survey that will go out to all residents of Chester Township is currently being drafted.

This is a plan for the future of your community and your feedback is extremely important to the LUP committee. When the survey is ready a postcard will be mailed to every property in town with instructions for taking the survey. We will follow up with communications on our website – [chestertwp.org](http://chestertwp.org), Facebook – Chester Township Zoning Department, the sign located outside of town hall on Chillicothe Rd, as well as various places in the community.

Once the survey results are received a public forum will be held to discuss the results and the next phase of the LUP committee, drafting the updated plan. Public participation and input is highly encouraged.

In other zoning news, over the past year the zoning department has organized and indexed over 900 case files for variances granted in the township. This makes it much easier to verify whether an apparent non-conforming structure has received a variance or needs to be brought into compliance. If you are not sure whether your property complies with zoning, feel free to contact the Zoning Inspector. If you plan on making any changes to your property, adding new structures, additions to an existing structure, swimming pools, etc. Please call and discuss ahead of time, not after a violation has occurred.

The zoning resolution, application forms, fee schedule, zoning map and much more are available on our website, if you can't find what you are looking for, call the zoning department and we will be happy to assist you.

**Chris Alusheff**

Zoning Inspector

440-729-7058 Ext.# 1006

[calusheff@chestertwp.org](mailto:calusheff@chestertwp.org)

Office Hours:  
Monday – Friday  
8AM-4PM



**Kathleen McCarthy**

Zoning Administrative Assistant

440-729-7058 Ext.# 1005

[kmccarthy@chestertwp.org](mailto:kmccarthy@chestertwp.org)

\*Visit Chester Township Zoning Department on Facebook

## OPERATION SANTA SLEIGH - Saturday, December 13, 2025

Each December, Chester Township bursts into the holiday spirit with its beloved annual “Operation Santa Sleigh” toy drive — a heartwarming celebration of community and generosity. The festivities kick off with a parade that departs from the Chester Township Police Department and makes its way to the West Geauga Plaza. Along the route, families and residents gather to enjoy the sights and sounds of the season, including a spirited performance by the West Geauga High School Band and the highly anticipated arrival of Santa Claus himself.

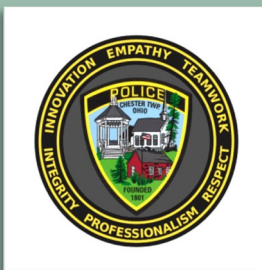


Families can donate gifts while enjoying a variety of refreshments and meeting officers from the Chester Township Police Department. In addition to the marching band, Operation Santa Sleigh also features performances by the talented West Geauga High School Choir, whose carols fill the plaza with holiday magic. The event is a hit with children thanks to surprise appearances by beloved characters such as Bluey and members of Paw Patrol, who roam the event greeting excited fans. Jungle Terry is also a crowd favorite, delighting audiences with his live animal presentations and interactive show. These engaging performances and characters make the celebration unforgettable for families with young children.

Beyond the festivities, Operation Santa Sleigh serves a deeper purpose—ensuring that every child in need within Geauga County receives a gift for the holidays. Thanks to the outpour of donations collected during the drive, the event consistently collects enough gifts to meet the needs of the entire county. Operation Santa Sleigh is a symbol of Chester Township's enduring community spirit. It unites the police department, local businesses, and residents in a shared mission of compassion and generosity.



Craig Young  
Police Chief  
440-729-1239 Business  
440-729-1234 Non-Emergency  
911 Emergency  
cyoung@chestertwp.org



Lisa Braemer  
Administrative Assistant  
440-729-1239 Business  
lbraemer@chestertwp.org

# Fire Department

## **Chester Township Fire Rescue: Fall and Winter Home Safety Reminder**

As temperatures drop and heating systems are turned on for the season, Chester Township Fire Rescue reminds residents that fall and winter bring increased risks for both fires and carbon monoxide incidents in the home. The good news is that most of these hazards can be prevented with routine maintenance and awareness. Below are key safety guidelines to help protect your family during the colder months.

### **Heating Equipment Safety**

Before using your furnace, fireplace, or wood stove, have all heating equipment professionally inspected and cleaned. Proper maintenance not only improves efficiency but also significantly reduces the risk of fires and carbon monoxide exposure. Keep anything that can catch fire such as blankets, curtains, papers, and furniture at least three feet away from heating equipment. Space heaters should always be turned off when leaving the room or going to sleep. Be sure to plug them directly into a wall outlet, never into an extension cord or power strip, which can overheat and start a fire.

### **Fireplace and Chimney Safety**

If your home has a fireplace, it is essential to have your chimney inspected and cleaned annually by a qualified professional. Chimneys can accumulate creosote, a highly flammable byproduct of burning wood, which can ignite and cause a dangerous chimney fire. Debris or animal nests in chimneys can also block ventilation, trapping carbon monoxide inside the home. Use a sturdy metal or glass screen in front of the fireplace to prevent embers or sparks from escaping. Burn only dry, seasoned wood. After using the fireplace, allow ashes to cool for at least 24 hours before placing them in a metal container with a tight-fitting lid. Store the container outside and away from the house.

### **The Dangers of Carbon Monoxide**

Carbon monoxide is a colorless, odorless, and tasteless gas produced when fuels like wood, gas, oil, or coal do not burn completely. Common sources of carbon monoxide in homes include furnaces, fireplaces, gas stoves, space heaters, water heaters, and generators.

When carbon monoxide builds up indoors, it can become deadly. Early symptoms of carbon monoxide poisoning often mimic the flu and may include headache, dizziness, weakness, nausea, confusion, and shortness of breath. In high concentrations or with prolonged exposure, carbon monoxide can be fatal.

To protect your home:

- Install carbon monoxide alarms on every level of your home, especially near sleeping areas
- Never use generators indoors or in garages, and keep them at least 20 feet away from windows and doors
- Ensure all fuel burning appliances are properly vented and maintained
- Never use gas stoves or ovens to heat your home
- If a carbon monoxide alarm sounds, leave the house immediately and call 911 from a safe location

### **Smoke and Carbon Monoxide Alarms**

Test your smoke and carbon monoxide alarms monthly to ensure they are working properly. Replace the batteries at least once a year, ideally during the end of Daylight-Saving Time.

Smoke alarms should be replaced every 10 years. Carbon monoxide alarms should be replaced according to the manufacturer's instructions, which is typically every 5 to 7 years. Having functioning alarms dramatically increases your chance of surviving a home fire or carbon monoxide emergency.

### **Protecting Your Home and Family**

Chester Township Fire Rescue encourages all residents to take the time to inspect their heating equipment, test alarms, and understand the signs and risks of carbon monoxide poisoning. These simple but important steps can prevent emergencies and save lives. If you have any questions or concerns, or need help testing alarms or understanding heating safety, please contact Chester Township Fire Rescue. We are here to help keep our community safe throughout the fall and winter seasons.

**Andrew Nagy**  
Fire Chief  
440-729-9951 Business  
anagy@chestertwp.org



**Salli Mehall**  
Administrative Assistant  
440-729-9951 Business  
smehall@chestertwp.org

\*Visit Chester Township Fire Rescue on Facebook

# Road Department

Fall and winter can be especially busy for the Chester Township Road Department, and we truly appreciate your help in keeping things running smoothly.

Since Chester Township does not offer leaf collection, we kindly ask that you please avoid blowing or placing leaves into roadside ditches. When leaves collect in ditches, they can block driveway pipes and your neighbors' drainage swales. Over time, this leads to flooding and other issues that take a lot of time to fix. We'd much rather focus our efforts on keeping roads safe than digging out leaves—so your cooperation here really helps us and your neighbors.

As we head into winter, it's also a great time to check on the condition of your mailbox. It should be sturdy and in good repair. If you live on a higher-speed road like 306 or 322, you might want to consider installing a snow barricade or mailbox protector. Even though our plow trucks move at slower speeds (usually around 20 mph), the snow coming off the plow blades can still be forceful enough to knock down mailboxes.

Here's how mailbox damage is handled:

- We only make repairs if the mailbox was physically hit by our plow equipment.
- If it can be repaired, we'll reuse the mailbox.
- If not, we'll replace it with a standard 4" x 4" post and a black metal mailbox.
- More information is available in our Mailbox Policy on the Township website.

We'd also like to ask for your help with garbage cans. Please try to keep them out of the street and placed at least 5 feet from the edge of the road, preferably in your driveway apron. This makes a big difference in how well we can clear the roads. In some cases, private plow drivers may move cans into the street while clearing driveways—if you use a private service, please remind them to keep garbage cans off the road and to fully push snow off the pavement. When snow is left in the street, it can freeze solid and create a challenge for our crews.

To help you stay informed this winter, we encourage you to check out our PlowOps System, which is available on the Township website or by visiting this link: <https://portal.plowops.com/public/?id=842962752>

The portal lets you see when your road was last serviced, how many times a plow has been through, and how many trucks are out during the day.

You may also notice new technology popping up around town. We're excited to begin using AI tools and weather cameras to help monitor and respond to road conditions more efficiently.

- Our weather station on Cedar Hill provides real-time alerts, images, and a 72-hour forecast including precipitation, air/surface temperatures, and road conditions.
- Cameras at Sperry/Sherman and Sherman/County Line also give us updated views so we can respond to changes quickly and effectively.

We hope these updates will help us better serve you this winter—and we're always grateful for your continued support and cooperation.

John Onyshko

Chester Township Road Superintendent

**\*Visit "Friends of Chester Roads" on Facebook**

John Onyshko  
Road Superintendent

440-729-9110

[jonyshko@chestertwp.org](mailto:jonyshko@chestertwp.org)



Lisa Luoma  
Administrative Assistant/Cemetery Sexton

440-729-9110

[lluoma@chestertwp.org](mailto:lluoma@chestertwp.org)

## New Resident Guide

### Water

Chester is served by private wells for water and each property owner is responsible for maintaining their own well and electric pump system. If the power is out, you will not have water unless you run your well pump on a generator.

### Sewage

94% of Chester residents have private septic systems to handle their household sewage and are responsible for maintaining it via private septic contractor. Geauga County Health website provides a list of septic haulers.

Gphohio.org

### Garbage

Each property owner is responsible for entering into a private contract for trash removal services with a private hauler. Popular companies are Dumpster Bandit, Waste Management and Kimble.

### Yard Waste

Property owners are responsible for disposing of their own yard waste either on their own or via contract with a private service provider.

### Zoning

Most common projects that require a zoning certificate are: Pools/Decks/Porches, Additions, Sheds/Garages, New Construction, Commercial and Industrial Business Use and Signs.

### Senior Citizens

Gauga County Department on Aging operates a senior center in Chester Township located at 8090 Cedar Road.

***\*Chester Township does not provide sewer/septic, trash removal or curbside leaf or brush pick-up services.***

## Recycle Parks

### Chester Recycle Park

12535 Chillicothe Road

Chesterland, OH 44026

7:00 AM until Dusk (M-F)

8:00 AM to Dusk on the weekends

\*Please do not leave your recyclables in plastic grocery bags – they require a different collection system.

\*Bins are currently emptied four times per week, and the Park is closed when the bins are full, in order to minimize wind-blown trash. Never leave your recycling anywhere on the ground!

\*Chester Township receives revenue for paper and cardboard that is placed into the “paper only”. Please separate your paper /cardboard from other recyclables.

### Geauga Collection Facility

12685 Merritt Road

Chardon, OH 44024 330-675-2673

GottaGoGreen.org

May 1st-October 31st \* 10AM-3PM

**Thursday & Fridays:** Electronics, Appliances and Foam

**Fridays Only:** Household Hazardous Waste

\*Electronics (e-waste), appliances, foam and Household Hazardous Waste is accepted year-round .

\*Team members will remove all items from your vehicle.

## Upcoming Events /Reminders

- **Chester Township Halloween Trick or Treat**  
Friday, October 31, 2025 from 6-8 PM
- **Daylight Saving Time Ends is November 2nd**  
The clocks will “fall” back 1 hour!
- **Election Day is November 4th**

# 2025 Chester Township Community Events



**Kiwaniis**  
CLUB OF WEST GEAUGA



**Trick or Treat Street**  
**Saturday, October 25th**  
**from 5-7 PM**

\*\*\*\*\*

**Visit [www.wgrc.org](http://www.wgrc.org)**  
**For more information**



**Christmas Tree**  
**Fundraiser**

**Drug Mart Plaza on**  
**Rt. 306**

**Tree Lot Hours:**  
**Mon.-Fri. 4pm-8pm**  
**Sat. & Sun. 9am-6pm**

\*\*\*\*\*

**Visit [www.wgkiwanis.org](http://www.wgkiwanis.org) for more**  
**information about membership and events.**



**CHESTER**  
**TOWNSHIP**



**Veterans Day**  
**Ceremony**

**Tuesday, November**  
**11th**  
**At Parkside Park**  
**11 AM**



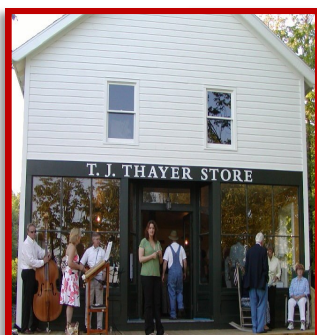
**Winter Fest**

**Saturday, November 29th**  
**At Parkside Park 5pm**

\*\*\*\*\*



**Chesterland Historical**  
**Foundation**



**Visit with Mrs. Claus**  
**Sunday, December 7 from**  
**1-4 PM**  
**At the Historical Village**

**Breakfast with Santa**  
**Saturday, December 6th**  
**at the WG High School**  
**8:30am-12:30pm**



\*\*\*\*\*

**Visit [www.geaugawestrotary.com](http://www.geaugawestrotary.com) for more**  
**information about membership and events.**